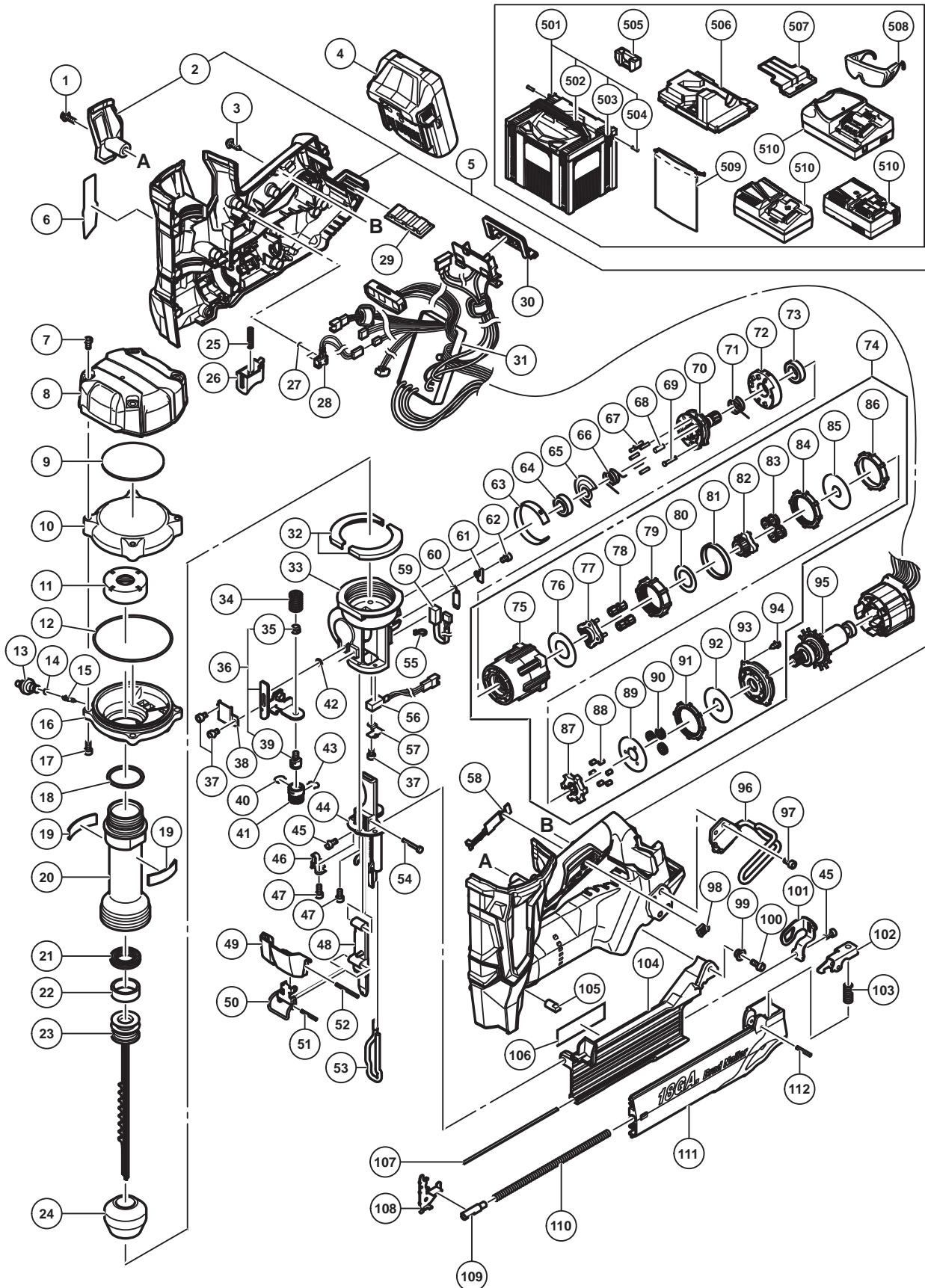


## ELECTRIC TOOL PARTS LIST

### CORDLESS BRAD NAILER Model NT 1850DBSL

2017-4-28  
(E1)



**PARTS**

NT 1850DBSL

ITEM NO.	CODE NO.	DESCRIPTION	NO. USED	REMARKS
1	880219	HEX. SOCKET HD. BOLT (W/FLANGE) M5 X 16	1	
2	371225	HOUSING (C)	1	
3	301653	TAPPING SCREW (W/FLANGE) D4 X 20 (BLACK)	14	
* 4	338891	BATTERY BSL 1860 (EUROPE,AUS,NZL)	2	INCLUD.507
* 4	335790	BATTERY BSL 1850 (EUROPE,AUS,NZL)	2	INCLUD.507
* 4	339783	BATTERY BSL 1830C (EUROPE,AUS,NZL)	2	INCLUD.507
5	371009	HOUSING ASS'Y	1	INCLUD.2
6		NAME PLATE	1	
7	371015	HEX. SOCKET BOLT M5	4	
8	371014	TOP COVER	1	
9	371012	RUBBER CUSHION (C)	1	
10	371035	CHAMBER COVER	1	
11	371040	SPECIAL NUT M36	1	
12	371037	O-RING (I.D 79.5)	1	
13	371039	CHARGE CAP	1	
14	872822	O-RING (S-5)	1	
15	371038	VALVE CORE	1	
16	371036	CHAMBER BASE	1	
17	949658	HEX. SOCKET HD. BOLT M5 X 18 (10 PCS.)	4	
18	371042	O-RING (I.D 32.99)	1	
19	371011	RUBBER CUSHION (B)	2	
20	371041	CYLINDER	1	
21	371046	X-RING	1	
22	371047	SLIDE RING	1	
23	371043	PISTON	1	
24	371048	PISTON BUMPER	1	
25	332000	SPRING (T)	1	
26	371021	TRIGGER	1	
27	371020	O-RING (I.D 2.5)	2	
28	371019	SWITCH CABLE (A)	1	
29	332668	RUBBER CUSHION	1	
30	370728	TERMINAL RUBBER (A)	1	
* 31	372185	WIRING	1	
* 31	370930	WIRING	1	FOR AUS
32	371010	RUBBER CUSHION (A)	2	
33	371049	NOSE	1	
34	371066	SPRING	1	
35	877371	NYLON NUT M5	1	
36	371063	PUSHING LEVER ARM ASS'Y	1	INCLUD.35,39
37	325077	SEAL LOCK HEX. SOCKET HD. BOLT M3 X 6	3	
38	371058	PUSHING LEVER ARM HOLDER	1	
39	371065	PUSHING LEVER PIECE	1	
40	881765	RATCHET SPRING	1	
41	887358	ADJUSTER	1	
42	371062	WASHER D4	1	
43	886331	RATCHET SPRING	1	
44	371055	BLADE GUIDE	1	
45	880413	NYLOCK HEX. SOCKET HD. BOLT M4 X 10	2	
46	371059	PUSHING LEVER ARM HOLDER (C)	1	
47	886311	SEAL LOCK HEX. SOCKET HD. BOLT M4 X 12	3	

## PARTS

NT 1850DBSL

ITEM NO.	CODE NO.	DESCRIPTION	NO. USED	REMARKS
48	371068	GUIDE PLATE	1	
49	371078	LOCK LEVER COVER	1	
50	371074	LOCK LEVER	1	
51	371077	ROLL PIN D3 X 22	1	
52	371080	ROLL PIN D3 X 32	1	
53	371081	PUSHING LEVER (A)	1	
54	371071	GUIDE PIN	1	
55	6696839	WIRE BAND	1	
56	371022	SENSOR (B)	1	
57	371052	SENSOR HOLDER (A)	1	
58	331790	LEVER (C)	1	
59	371023	SENSOR (C)	1	
60	371054	SENSOR HOLDER (B)	1	
61	371053	SENSOR HOLDER (A)	1	
62	325241	SEAL LOCK HEX. SOCKET HD. BOLT M3 X 8	1	
63	371051	SHIELD RING	1	
64	371033	BALL BEARING 6900VVCM	1	
65	371032	WASHER (A)	1	
66	371027	WHEEL SPRING (A)	1	
67	371030	NEEDLE ROLLER D3	6	
68	371031	NEEDLE ROLLER D4.5	1	
69	371029	PIN (A)	1	
70	371026	PIN WHEEL	1	
71	371028	WHEEL SPRING (B)	1	
72	371034	POSITION DETECTOR	1	
73	6901VV	BALL BEARING 6901VV	1	
74	371025	GEAR BOX ASS'Y	1	INCLUD.75-94
75		GEAR CASE	1	
76		WASHER (E)	1	
77		CARRIER	1	
78		PLANET GEAR (C) (4 PCS.)	4	
79		RING GEAR (C)	1	
80		WASHER (D)	1	
81		GEAR SPACER	1	
82		PINION (C)	1	
83		PLANET GEAR (B) (4 PCS.)	4	
84		RING GEAR (B)	1	
85		WASHER (C)	1	
86		LOCK RING	1	
87		PINION (B)	1	
88		NEEDLE ROLLER (A) (6 PCS.)	6	
89		WASHER (B)	1	
90		PLANET GEAR (A) (3 PCS.)	3	
91		RING GEAR (A)	1	
92		WASHER (A)	1	
93		MOTOR SPACER	1	
94		TAPPING SCREW D3 X 8	4	
95	361054	ROTOR	1	
96	371214	HOOK	1	
97	331109	LOW HEAD HEX. SOCKET BOLT M4 X 8	4	

**PARTS**

NT 1850DBSL

ITEM NO.	CODE NO.	DESCRIPTION	NO. USED	REMARKS	
98	326276	LEVER (A)	1		
99	371086	DISTANCE PIECE M5	1		
100	996399	HEX. SOCKET HD. BOLT (W/FLANGE) M5 X 12	1		
101	371095	PLATE	1		
102	885894	STOP LEVER	1		
103	885895	SPRING	1		
104	371088	MAGAZINE (A)	1		
105	371013	CAP SCREW	1		
* 106	372191	CAUTION LABEL (EU)	1		
* 106	371107	CAUTION LABEL	1	FOR AUS	
107	885898	NAIL PLATE	1		
108	887995	NAIL FEEDER	1		
109	885899	FEEDER PIECE	1		
110	885900	FEED SPRING	1		
111	886849	MAGAZINE COVER	1		
112	949685	ROLL PIN D3 X 20 (10 PCS.)	1		

**STANDARD ACCESSORIES**

ITEM NO.	CODE NO.	DESCRIPTION	NO. USED	REMARKS	
501	337528	CASE ASS'Y (STACKABLE 4)	1	INCLUD.502-504	
502	336473	HANDLE	1		
503	336472	LATCH	4		
504	336474	HINGE	2		
505	886846	NOSE CAP (A)	2		
506	371895	BOTTOM CUSHION	1		
507	329897	BATTERY COVER	1		
508	875769	PROTECTIVE GLASSES	1		
509	6698667	POUCH CLOTH	1		
* 510		CHARGER (MODEL UC 18YSL3)	1		
* 510		CHARGER (MODEL UC 18YML2)	1		
* 510		CHARGER (MODEL UC 18YFSL)	1		